

## Metrobility® Ethernet Media Converters

Flexible 10Mbps and 100Mbps media, speed, and distance solutions



100Mbps R141 & 2141



10Mbps R111 & 2111

The Ethernet and Fast Ethernet media converters by Telco Systems offer versatile speed, media, and distance to cost-effectively distribute fiber optic connections. These units provide seamless connectivity within the LAN, or between the LAN and public or private networks. These Metrobility® devices are available as a preconfigured 10Mbps unit, a selectable 10 or 100Mbps unit, or an auto-negotiating 10/100Mbps unit.

These mixed-media devices offer seamless integration of copper and fiber connections providing full signal restoration for accurate data transmission and maximum cable length support.

The interface line cards are supported in all of the Metrobility platforms and can be managed when configured with a R502-M management card. The standalone options utilize a rugged fabrication to offer superior reliability for the most demanding environments. Each standalone is equipped with an external, universal AC power supply.

### 10Mbps – Preconfigured

The Metrobility R111 and 2111 preconfigured media converters offer transparent integration of fiber optic connectivity or copper-to-coaxial integration for 10Mbps Ethernet networks.

### 10 and/or 100Mbps – DIP-switch or software settable

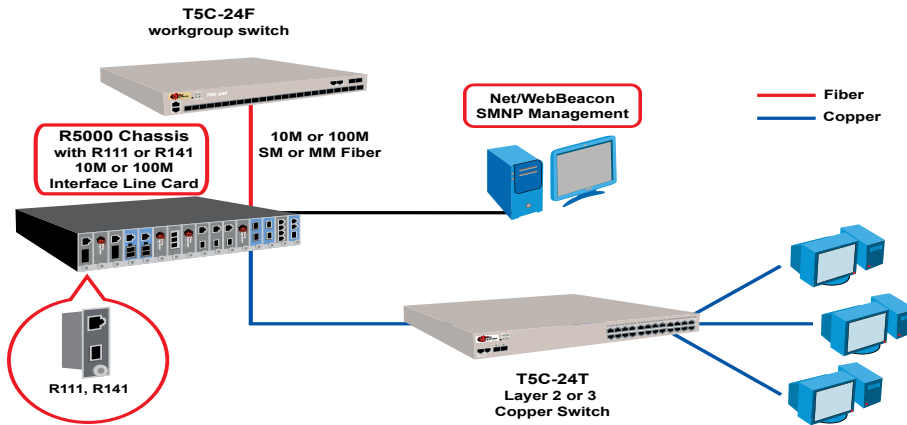
The Metrobility R141 line card and the 2141 standalone is a transparent two-port, copper-to-fiber media converter that can be set to either 10Mbps on both ports or 100Mbps on both ports.

The R141 line card is supported in all Metrobility chassis options. When configured with the R502-M management card, the line card may be locally managed through a web browser or with NetBeacon® ESP Element Manager.

- Complete range of fiber optic connector types provide network design flexibility
- Managed option-NetBeacon® and WebBeacon - when configured with a management card in a Metrobility platform
- High-quality, reliable design lowers long term cost of ownership
- Full signal restoration - with low bit delay - allows for maximum segment length
- Fully IEEE 802.3 compliance ensures compatibility with other vendors' equipment for flexible connectivity
- Single-strand, bi-directional wavelength multiplexing (BWDM) option
- Interoperates with half-duplex or full-duplex mode devices
- Class B certified models

# Metrobility® Ethernet Media Converters

Variable speed, media and distance connections



## Key Applications

- Copper-to-fiber conversion
- Distance extension of 2km, 20km, 40km and 100km

## Specifications

### Interfaces

#### Data Rate

- R141 10Mbps and 100Mbps
- 2141 100Mbps half duplex  
200Mbps full duplex
- R111 and 2111 10Mbps half duplex  
20Mbps full duplex\*

#### Network Connections

- Connector Shielded RJ-45, 8-pin jack
- Impedance 100 ohms nominal
- Supported Link Length 100 m
- Signal Level Output (peak differential)  
2.2 to 2.8 V (10Mbps)  
0.95 to 1.05 V (100Mbps)
- Signal Level Input  
R141 and 2141 585 mV minimum (10 Mbps)  
200 mV minimum (100 Mbps)
- R111 and 2111 350 mV minimum
- Cable Type CAT 3, 4, 5 UTP/STP (10Mbps)  
CAT 5 or 5E UTP/STP (100Mbps)

### Standards Compliance

- IEEE 802.3
- IEEE 802.3u

### Safety and EMC Compliance

- UL, CSA, CB
- EN60950 (safety)
- EN55024:1998 (immunity)
- IEC 825-1 Classification (eye safety)
- Class 1 Laser Product (eye safety)

#### R111 and 2111

- FCC Part 15 Class A
- ICES-003 Class A (emissions)
- EN55022 Class A (emissions)

#### R211 and 2141

- CE
- EN55024:1998 (immunity)
- EN55022 Class B (emissions)
- FCC Part 15 Class B
- ICES-003 Class B (emissions)
- IEC 825-1 Classification (eye safety)
- Class 1 Laser Product (eye safety)

### General

#### Environmental

- Operating Temp 0°C to 55°C (2111 and 2141)  
0°C to 50°C (R111 and R141)
- Operating Humidity 5% - 95% non-condensing
- Storage Temp -30°C to 70°C (2111 and 2141)  
-25°C to 70°C (R111 and R141)

#### Physical Specifications

##### R111 and R141

- Power - Input 5 V DC @1.0 A, 5.0 W

##### 2111 and 2141

- Power  
AC Input 90~250V 50/60Hz  
DC Output 5 V DC @1.2 A, 5.0 W
- Dimensions  
4.83" L x 3.26" W x 1.71" H  
12.3 cm x 3.26 cm x 4.3 cm
- Weight 3.2 oz (0.09kg)

## Ordering Information

Part Number	Description	Connector	Distance
Line Card	Standalone		
10Mbps Pre-Configured			
R111-13-B	2111-13-B 10BASE-T to 10BASE-FX (MM)	SC	2km
R111-15-B	2111-15-B 10BASE-T to 10BASE-FX (MM)	ST	2km
10Mbps or 100Mbps Settable			
R141-13	2141-13 10BASE-T to 10BASE-FX or 100BASE-T to 100BASE-FX (MM)	SC	2km
R141-14	2141-14 10BASE-T to 10BASE-FX or 100BASE-T to 100BASE-FX (SM)	SC	20km
R141-15	2141-15 10BASE-T to 10BASE-FX or 100BASE-T to 100BASE-FX (MM)	ST	2km
R141-16	2141-16 10BASE-T to 10BASE-FX or 100BASE-T to 100BASE-FX (SM)	ST	20km
R141-17	2141-17 10BASE-T to 10BASE-FX or 100BASE-T to 100BASE-FX (SM)	SC	40km
R141-1J	2141-1J 10BASE-T to 10BASE-FX or 100BASE-T to 100BASE-FX (SM)	SC	100km
R141-1X *	2141-1X 10BASE-T to 10BASE-FX or 100BASE-T to 100BASE-FX (SM - BWDM) 1550nm/1310nm	SC	20km
R141-1Y *	2141-1Y 10BASE-T to 10BASE-FX or 100BASE-T to 100BASE-FX (SM - BWDM) 1310nm/1550nm	SC	20km

\* Must be ordered in pairs (-1X and -1Y). Each end of the link must be configured with a different receive and transmit wavelength.



### Int'l Headquarters

Tel: +972-9-866-2525  
Fax: +972-9-866-2500  
sales.emea@telco.com  
http://www.telco.com

### US Headquarters

Tel: +1-800-221-2849  
Fax: +1-781-551-0538  
sales@telco.com  
http://www.telco.com

### Germany

Tel: +49-241-4635490  
Fax: +49-241-4635491  
info@batm.de  
http://www.telco.com

### France

Tel: +33(0)1-567-12-773  
Fax: +33(0)1-437-71-780  
support@batm.fr  
http://www.batm.fr

### Asia Pacific

Tel: +65-6224-3112  
Fax: +65-6220-5848  
info.apac@telco.com  
http://www.telco.com

### Japan

Tel: +81(3)5211-1705  
Fax: +81(3)5510-9131  
Info.jp@telco.com  
http://www.telco.com